






1

DEEP SEA TOP SEWING PATTERN

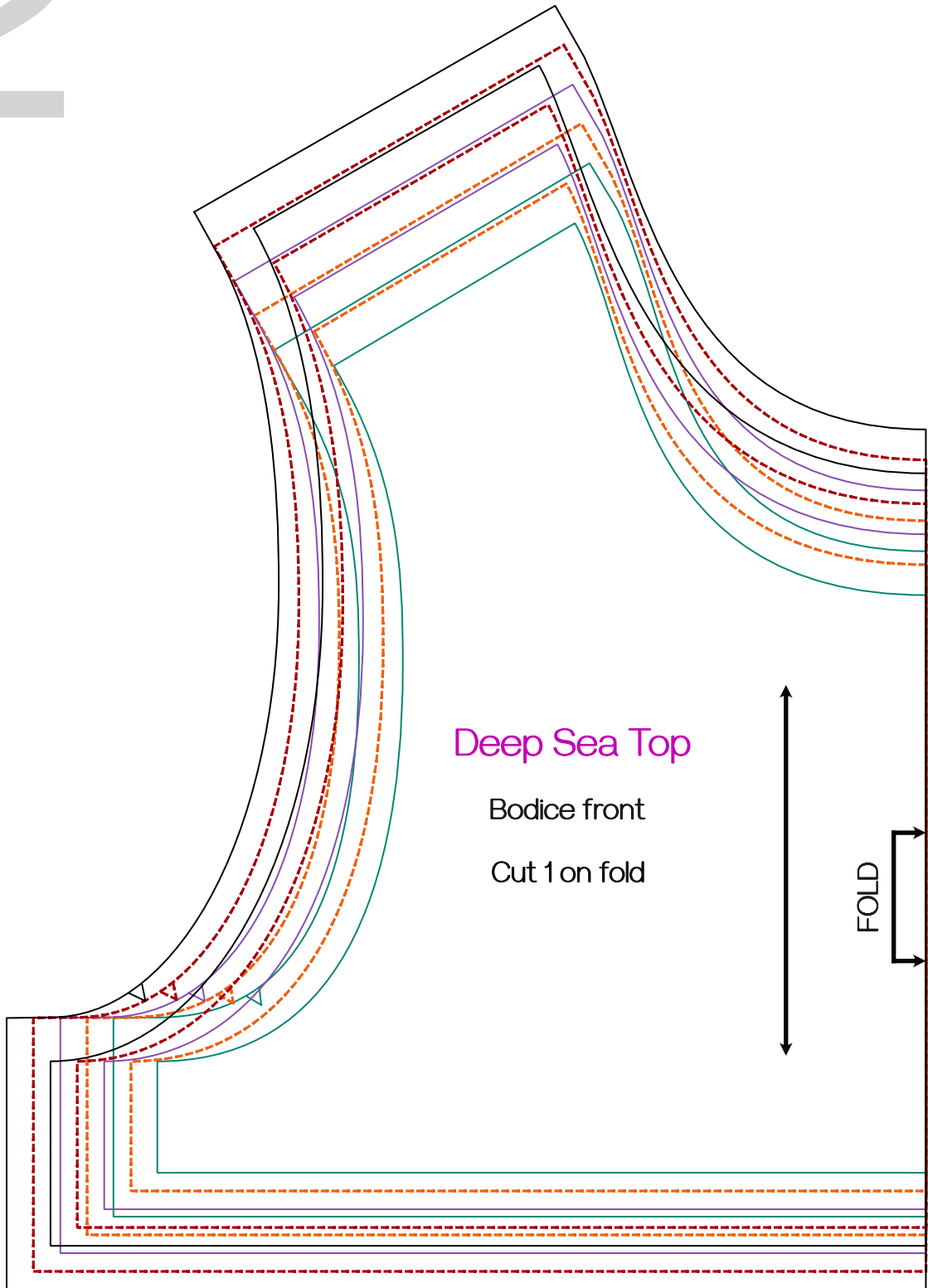
Key

	92 18-24M
	98 2-3Y
	104 3-4Y
	110 4-5Y
	116 5-6Y

Test Square
50x50mm

For instructions and measurements charts visit www.midnightsewer.com

2



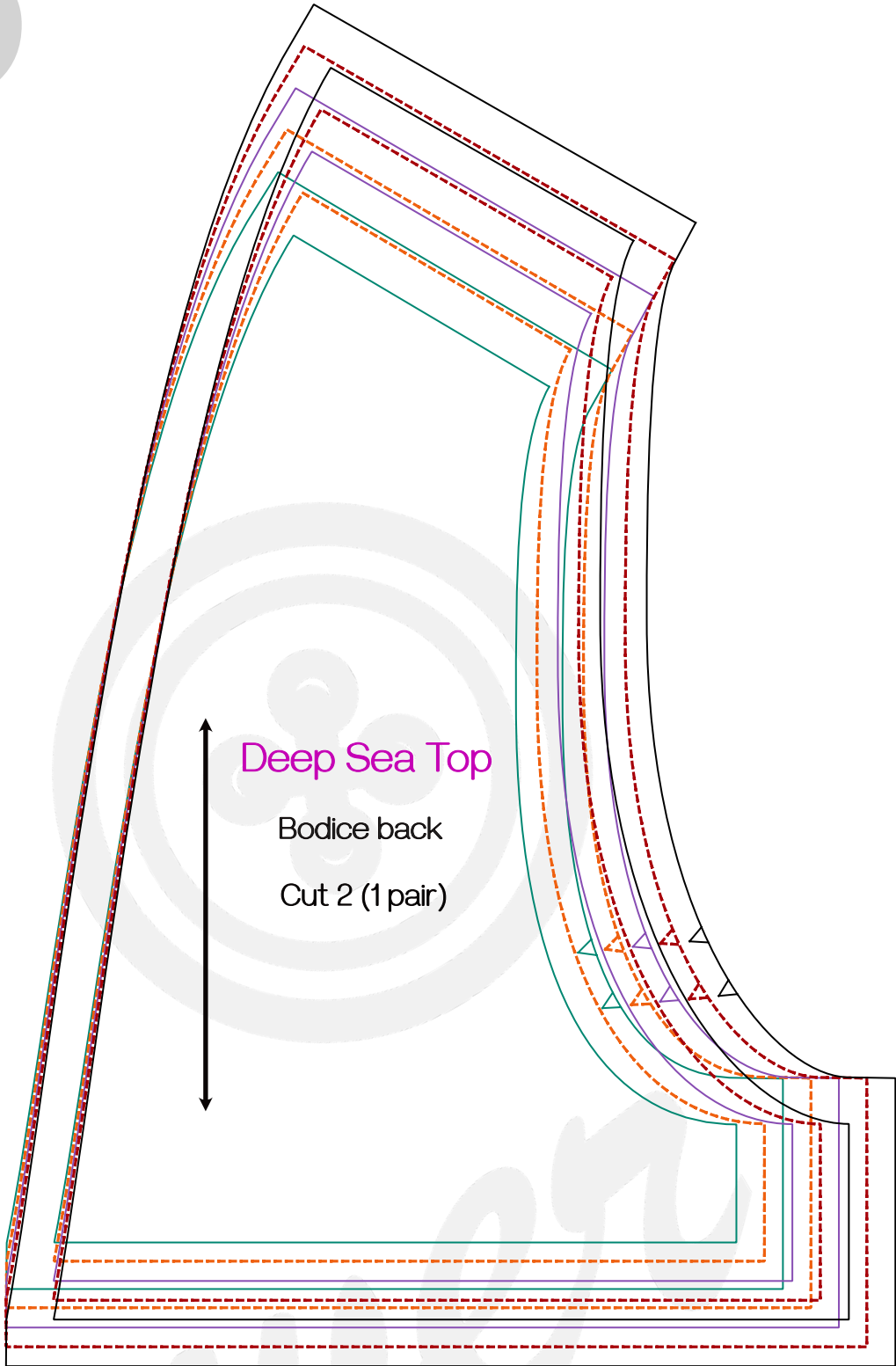
Deep Sea Top

Bodice front

Cut 1 on fold

FOLD

3



Deep Sea Top

Bodice back

Cut 2 (1 pair)



4

mid



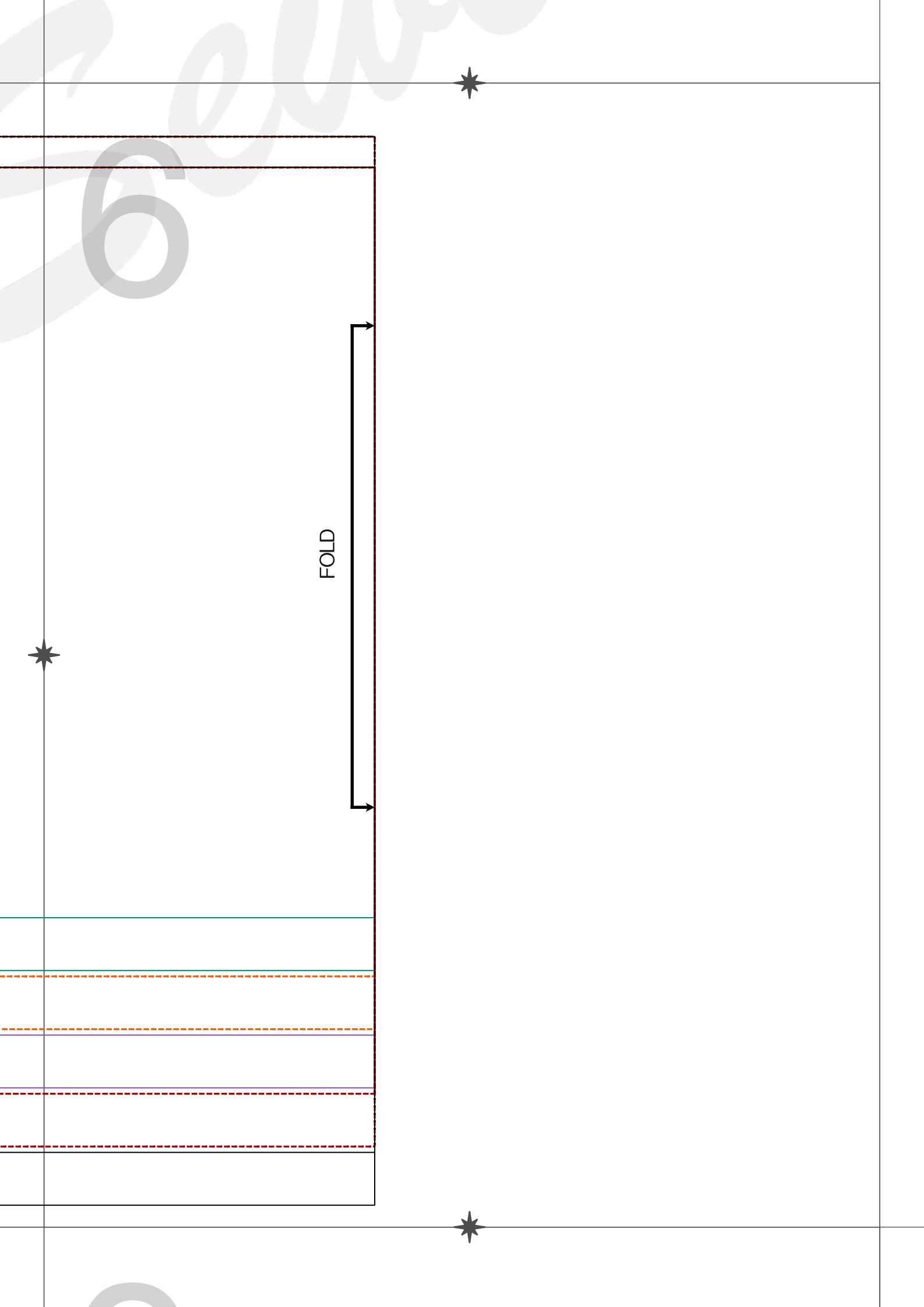
5

Deep Sea Top

Gathered panel

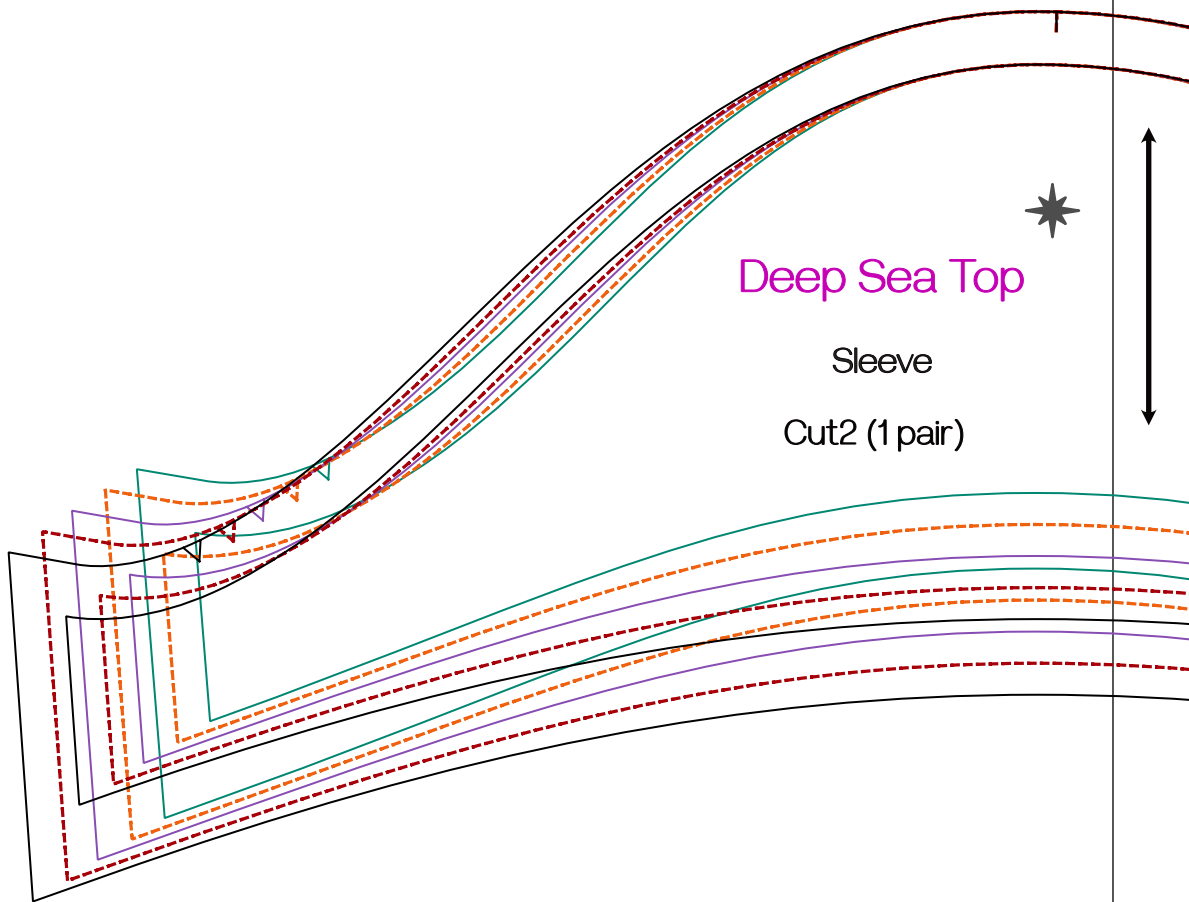
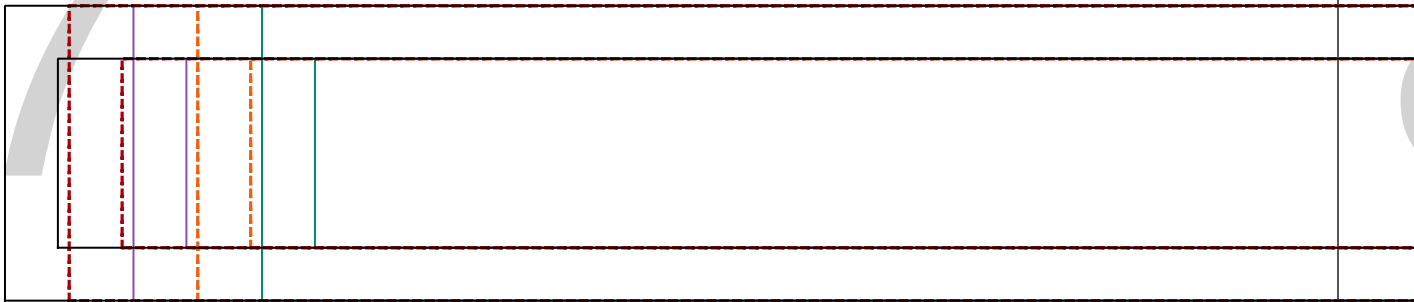
Cut 1 on fold





FOLD

7



Deep Sea Top

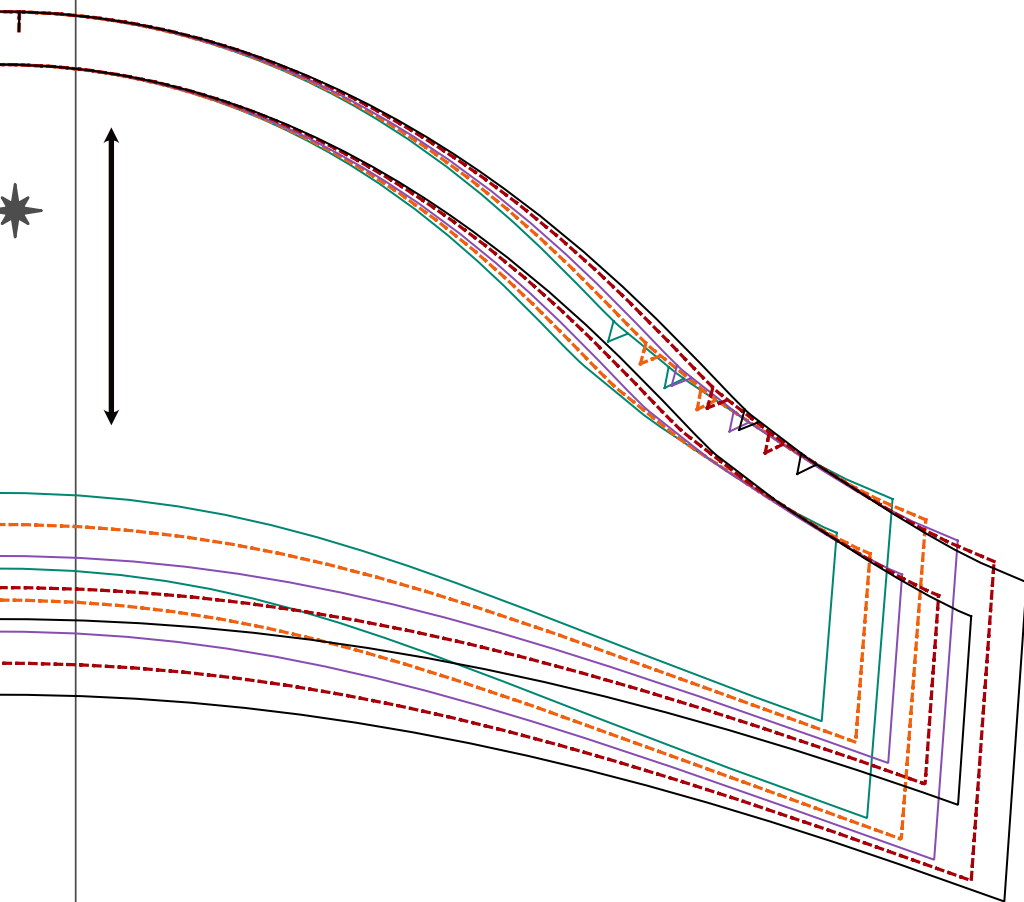
Sleeve

Cut2 (1 pair)

8

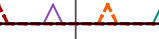
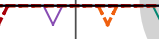
Deep Sea Top

Belt Cut 2 on fold





9



10

FOLD

